

# Middleware install

Last Modified on 25/10/2024 10:36 am AEDT

This guide explains how to install Zedmed's Cloud Middleware to facilitate secure messaging to and from Zedmed Cloud.

## Installation Summary

Zedmed's Middleware installs to ProgramData, then autoruns the configuration exe file (with credentials) to add a 'results' and 'scans' folder to C:\ZedmedMiddleware for secure messaging providers to get outgoing files from. It will also add an ini file that can be edited to provide the Cloud Middleware with the locations of messaging providers that perform inbound communications.

## Installation steps:

1. Run the Zedmed Cloud Middleware installer **ZedmedCloudFileService-v3.msi**.

The installer can be downloaded from Zedmed's [Client Portal](#).

2. Review and Accept the End-User License Agreement.






3. Select **Install**.
4. If required, respond to the user access control prompt to provide administrator rights.

The installer takes the following steps to install and register the middleware service:

- a. Copies the program files to the local computer. The default is 'C:\ProgramData\Zedmed Cloud\'.  
b. Registers the service with the operating system under the name **Zedmed Cloud File Service**.  
c. Sets the service to start automatically using the local system account, whenever the computer starts.  
d. Starts the service running in a waiting state, where no actions are taken until the configuration is completed.

5. When the final screen, tick select **Configure the Zedmed Cloud File Service now?**

Below is the **Zedmed Cloud File Service** running in Windows.

 Zedmed Clinical		Running	Automatic	Local System
 Zedmed Cloud File Service	This service ...	Running	Automatic (...)	Local System
 Zedmed Office HI		Running	Automatic	Local System

## 6. Select **Finish**.

This will open the configuration utility,, which is covered in the next section.

## Cloud Middleware configuration

The configuration utility starts automatically from the installer. It can also be started manually by running `C:\ProgramData\Zedmed Cloud\ZedmedCloudFileService.exe'`

When the Cloud middleware has completed the installation, it will automatically run `ZedmedCloudFileService.exe` - the configuration utility.

When the configuration utility opens:

### 1. Select **Yes**.

You will be prompted to select a folder.

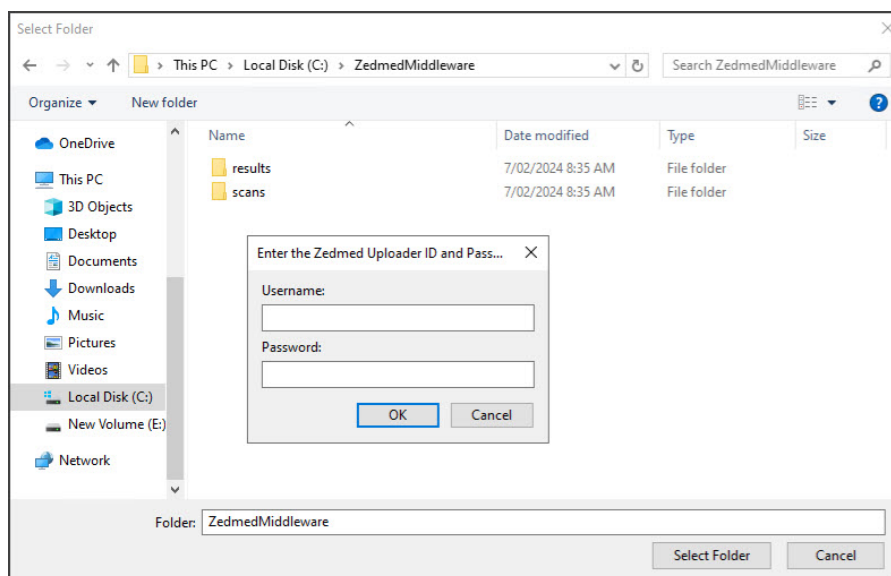
2. Manually create a folder called `C:\ZedmedMiddleware`.
3. Select `C:\ZedmedMiddleware` as the target directory

This will be used for the 'results' and 'scans' folders

- **Scans** - files in this directory are uploaded to the Zedmed Cloud **Scans** folder.
- **Results** - files in this directory are uploaded to the Zedmed Cloud **Results** inbox. 'Download' directory in Zedmed.

If it is being installed on an old on-prem server, the results file should be `c:\Zedmed\downloads`

If it is being installed on a workstation for cloud customers, `c:\Zedmedmiddleware\results` (see screenshot below)



### 4. When prompted, enter the username and password.

These credentials are provided by CIS for that client and stored in 1Password.

### 5. Select **OK**.

**Note:** Once entered, credentials can't be viewed. The client must store them securely. They may be

