

# Logging in with new SSO

Version: 1.00 | Last Modified on 15/04/2026 3:11 pm AEST

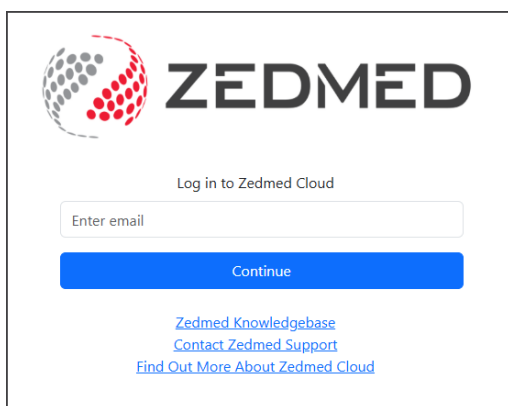
Zedmed v39 introduces a new single sign-on experience, where you only need to log into your Zedmed server once. After that, you will only need to log into Zedmed Cloud - your Zedmed server will automatically open without any prompts.

This guide is for Zedmed Cloud customers who use the URL [signin.zedcloud.com.au/login](https://signin.zedcloud.com.au/login)

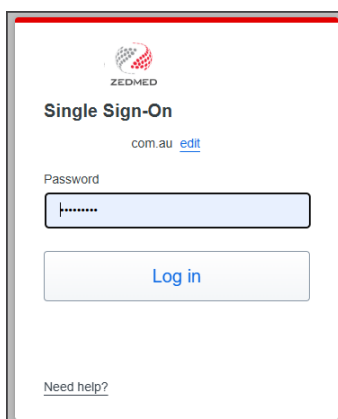
Printable PDF to give to users [SSO-quickstart.pdf](#) 

In each step, when asked for a username, it is the one by zedmed with the format '<your name>@zedcloud.com.au'

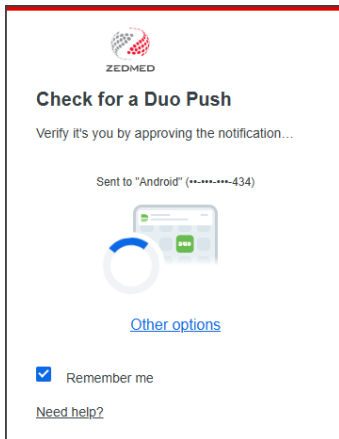
1. Log in to [signin.zedcloud.com.au/login](https://signin.zedcloud.com.au/login)
2. Enter your Zedcloud email address: '<your name>@zedcloud.com.au'
3. Select **Continue**.



4. Enter your password and select **Log in**.



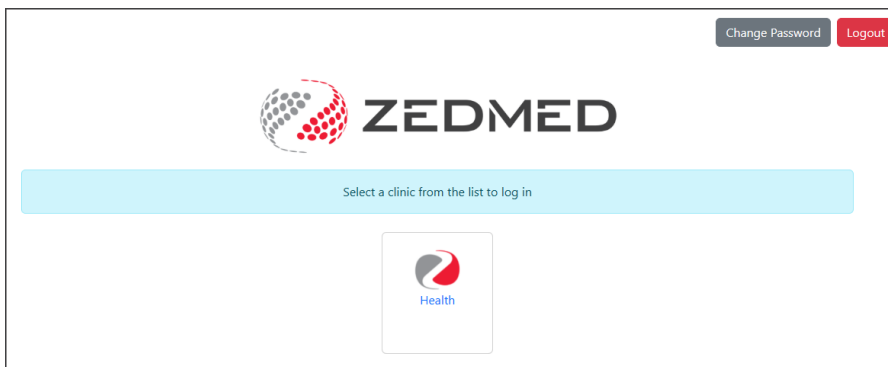
5. Respond to the Duo notification on your phone.



The Zedmed Cloud landing page will open.

6. Select your Zedmed instance.

Customers using Zedmed's implementation of DUO SSO will also see a **Change Password** option.

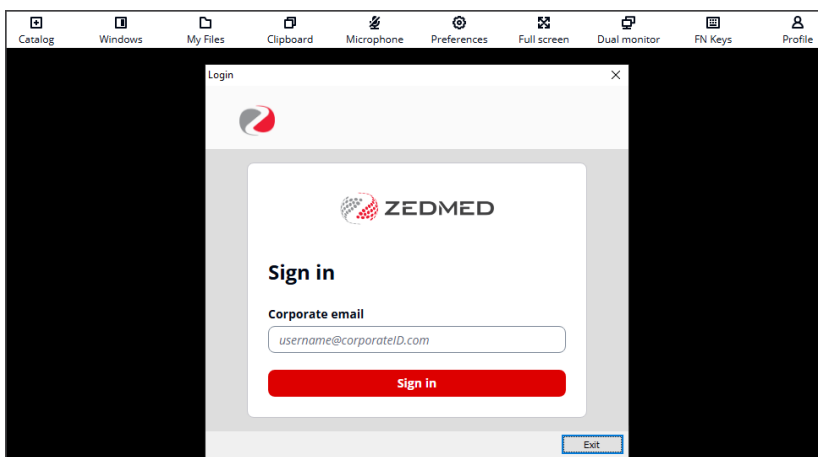


Now you will perform the one-time SSO login.

After you perform the steps below, Zedmed will remember you and automatically log you in every day.

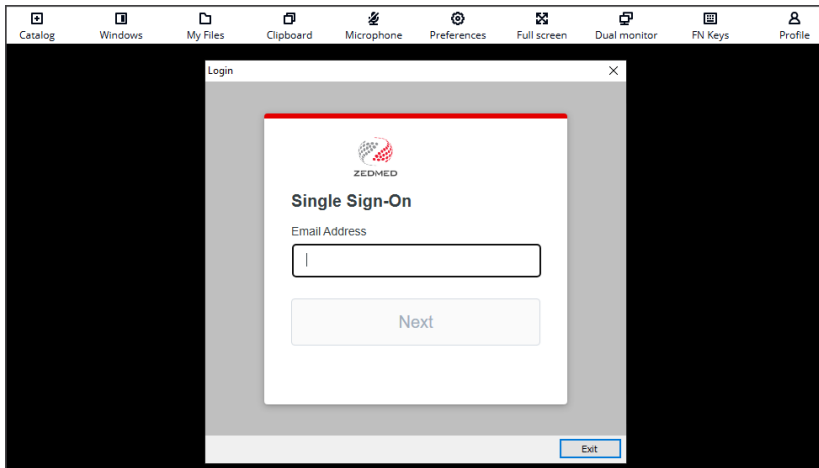
7. Enter your Zedcloud email address: '<your name>@zedcloud.com.au'.

8. Select **Sign in**.

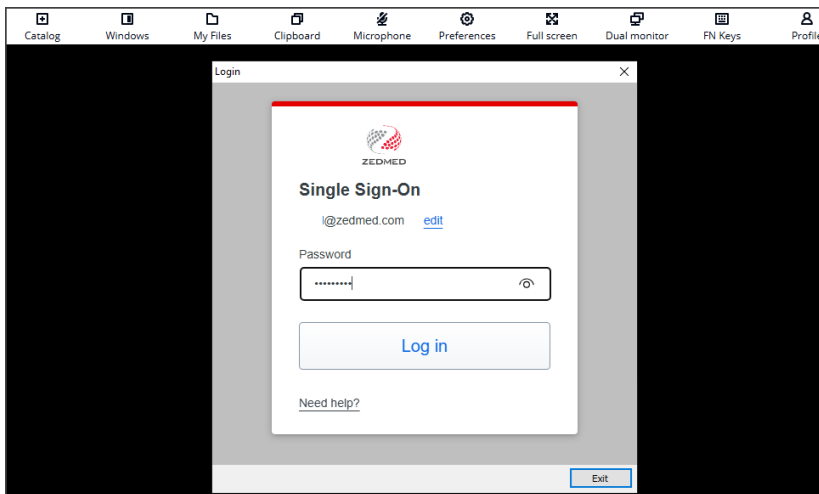


9. Enter your Zedcloud email address: '<your name>@zedcloud.com.au'.

10. Select **Next**.



11. Enter your Zedcloud password.
12. Select **Log in**.



**Zedmed Office will open.**